

**INDIAN INSTITUTE OF TROPICAL METEOROLOGY, PUNE – 8**  
**Publications Added in I.I.T.M. Library**  
**MAY- 2008**

**BOOK**

**551.58/GLA**

**Acc. No. 7575**

La Nina and Its Impacts – Facts and Speculation  
- Glantz M.H. Ed.  
- United Nations University Press, Tokyo, Japan, 2002  
pp.271

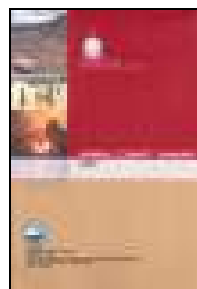
*(Donated by Dr. R.H. Kriplani, Sc.'E', Forecasting Research  
Division, I.I.T.M., Pune)*



**INDIA METEOROLOGICAL DEPARTMENT PUBLICATION**

**Acc. No. IMD401/03**

Annual Climate Summary -2006  
- Dr. Rajeevan M., Srivastava A.K.  
- National Climate Centre,  
- A.D.G.M.(R), I.M.D., Pune, pp. 24



**MISCELLANEOUS METEOROLOGICAL PUBLICATIONS**

**Acc. No. MET-466**

MEGHA- Focus on Earth's Polar Regions, Issue No.25,  
October 2007  
- Bhandari S. Ed.  
- Indian Meteorological Society - Ahmedabad Chapter  
Ahmedabad, 2007, pp.30

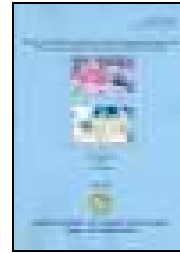


## RESEARCH REPORT

**Acc. No. RR-118**

Roles of Zonally Asymmetric Wind Forcing and monsoonal Flow on the Indian Ocean Dipole (IOD) Evolution

- Krishnan R. and Swapna P.
- Research Report No.118, July 2007, pp.39



## SWEDISH METEOROLOGICAL AND HYDROLOGICAL INSTITUTE REPORT

**Acc. No. SMHI -66**

2D Meso-scale Re-analysis of Precipitation, Temperature and Wind over Europe – ERAMESAN  
Time Period 1980-2004

- Jansson A., Persson C., Strandberg G.
- Swedish Meteorological and Hydrological Institute  
Sweden, RMK No.112, 2007, pp.28



\*\*\*\*\*