

**PRE-BID M.O.M FOR INTERIOR AND FURNISHING WORK OF LABORATORY BUILDING AND
GUEST HOUSE BUILDING AT BRANCH OFFICE NEW DELHI.**

As per tender notice a Pre-Bid Meeting for the subject work held 22.11.2013(1100hrs) at Branch Office New Delhi. The site was shown to vendors and during the discussion in the pre-bid meeting the following decisions were taken:

SL. No.	Question raised by the Vendor	Tender Document Reference	Decision Taken
01.	<i>Loose furniture drawings.</i>	<i>Tender document Loose furniture section item no-1.</i>	<i>Refer tender document and specification laid down in boq.</i>
02.	<i>Boq item no-20.</i>	<i>Tender document Loose furniture section item no-20.</i>	<i>Span seating, model no-cruze-1 Or eqvavalent as per specifications laid in boq.</i>
03.	<i>Landscape.</i>	<i>Tender document Section –h</i>	<i>Detailed specifications, revised BOQ and drawings pertaining landscape, will be uploaded on website Contractors shall submit their bids accordingly.</i>
04.	<i>Boq item no-10. Size of office almirah.</i>	<i>Tender document Loose furniture section item no-10.</i>	<i>Standard size of ht 6'-6", width 3', depth – 1'-7". (make godrej and eqvavalent)</i>
05.	<i>Veneer thickness for furniture.</i>	<i>Tender document Loose furniture section.</i>	<i>Thickness 4 mm.</i>
06.	<i>Dining table designer.</i>	<i>Tender document Loose furniture section item no-1&2.</i>	<i>Designer table designer means glass frothing design, edging and webbing to make a smooth surface.</i>
07.	<i>Boq item no-08, basic rate for vitrified floor tiles.</i>	<i>Tender document Section – a (flooring). Item no-8 and 9.</i>	<i>As per tender</i>

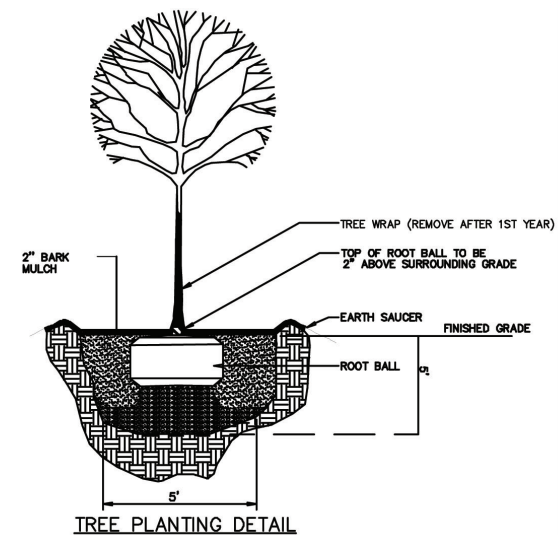
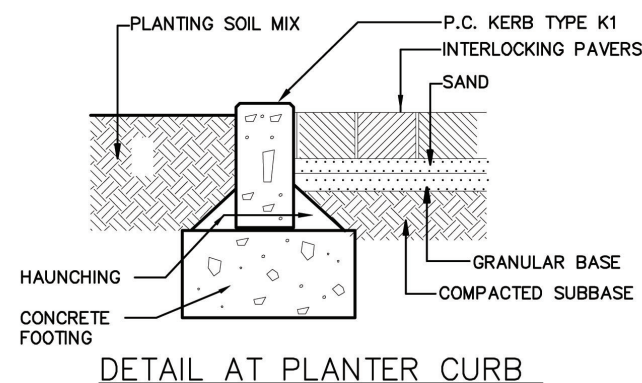
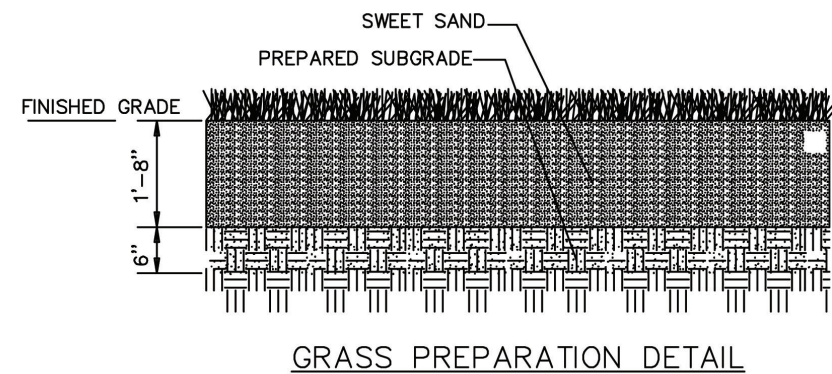
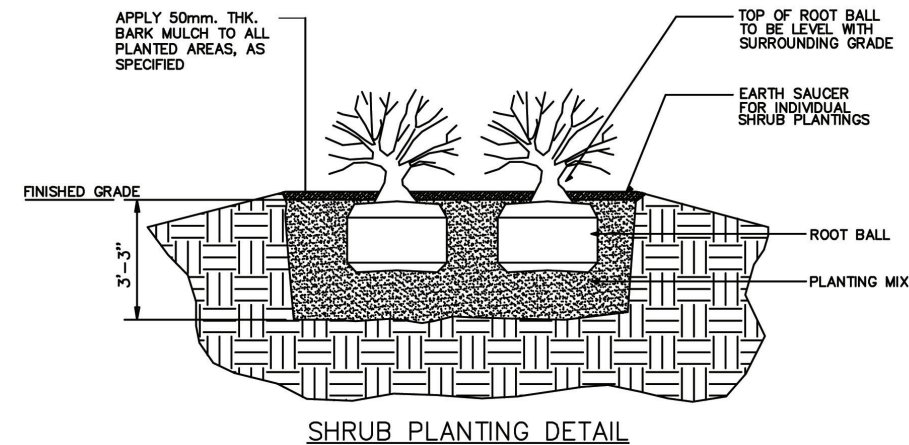
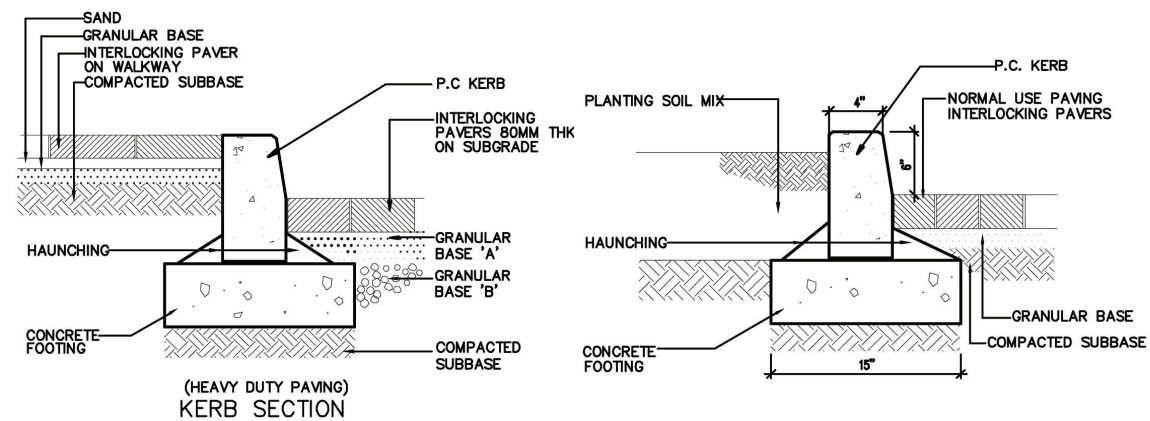
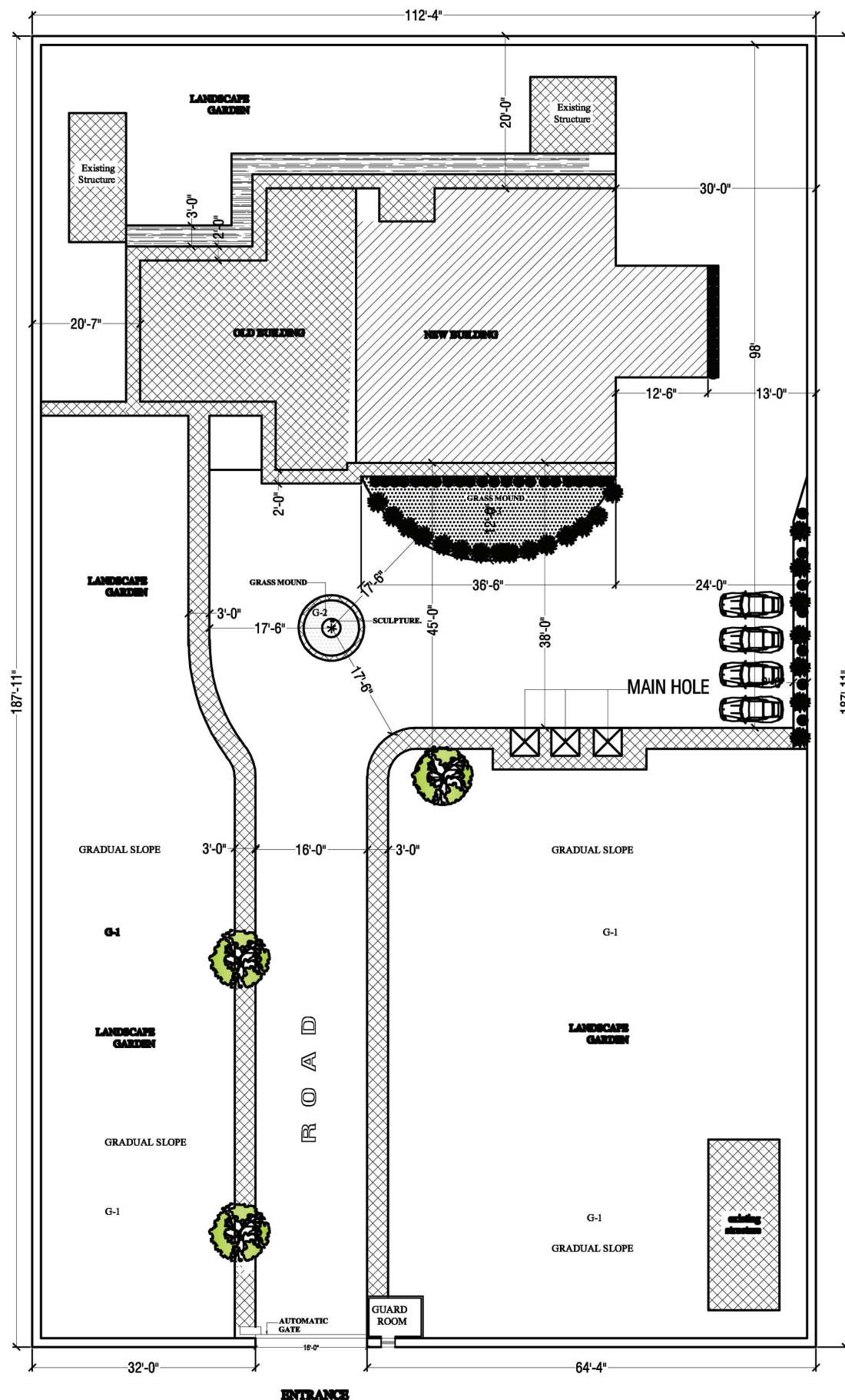
08.	<i>Interior work pop thickness 1-2 mm.</i>	<i>Tender document Section – a (wall treatment & painting). Item no-1.</i>	<i>Required thickness is to be maintained to obtain smooth surface in plum. (sahul,phanti, soot)</i>
09.	<i>Completion period</i>	<i>Tender document</i>	<i>For: 14 days+60 days Read: 14 days+ 76 days from the date of LOI.</i>
10.	<i>Secured advance against material at site</i>	<i>raised by vendor</i>	<i>Secured advance against material at site not more than Rs. 15 lakhs will be paid at the rate of 75% of the cost of material purchase invoice on submission of original invoice and material should be on site. This will be adjusted in the next R.A bill.</i>
11.	<i>Lowest Bidder criteria</i>	<i>Tender document</i>	<i>L1 tender will be decided for the total cost (basic cost + taxes) of the work.</i>
12.	<i>Type of granite to be used.</i>	<i>Tender document Section-a, flooring Item no-10.</i>	<i>Bangalore ruby red/brown/or shade approved by the architect and on counter tops galaxy granite. Grade-1 quality.</i>
13.	<i>On ward robe as well as beds whether veneer with PU polish has to be provided or laminate finish has to be given on external as well as on internal surfaces.</i>	<i>Tender document Section loose furniture.</i>	<i>Veneer with PU polish is has to be provided on both internal and external surfaces.</i>
14.	<i>Glass mosaic tiles of which make is to be provided.</i>	<i>Tender document Section-a, flooring Item no-16.</i>	<i>Accura glass tiles, Sardinia, Nitco and equivalent.</i>
15.	<i>In electrical, switches & sockets etc. Of which make to be provided.</i>	<i>Tender document Electrical works section</i>	<i>Anchor Roma, havells & equivalent.</i>

16.	BID ENVELOPE	Tender document	<p><i>Envelop No.1(Technical Bid) consist of :</i> <i>Copy of Pre-bid MOM, Tender fee receipt or D.D of tender fee EMD</i> <i>Complete tender document ,tender drawings , BOQ for landscape (blank) duly signed and stamped . Company profile and related documents in prescribed format as per tender, methodology and bar chart. All pages of documents should be duly signed and stamped.</i></p> <p><i>Envelop No.2 (Commercial bid); Price bid(Hard Copy duly filled, signed and stamped & soft copy in the form of CD) in accordance with the pre bid MOM and revised BOQ for landscape</i></p> <p><i>Envelop No.3</i></p> <p><i>Consist of Sealed Envelope 1 & 2</i></p>
<p>NOTE: Contractor shall submit their Bid accordance with tender document, pre-bid M.O.M and revised specifications & BOQ for landscape</p>			

Revised BOQ FOR EXTERNAL DEVELOPMENT AND LANDSCAPE DETAILS.

SL.NO	Description	Unit	Qty	Basic Rate	Taxes	Rate (Basi+Taxes)	Amount (Rs.)
	HORTICULTURAL BOQ						
	Supplying and planting trees as per under noted varieties of heights as mentioned above ground level after planting including excavation of appropriately sized pit, removal of excavated earth to desired location filling the pit with soil mixture etc. as per specifications and as directed complete in all respect including maintaining, watering and nurturing the trees for six months. The trees may be planted individually in rows or in cluster as per direction						
1	Lawn-Jyosia Japanica						
1.1	Providing, planting and developing lawns in an approved variety grass including excavating the existing soil to a maximum depth of about 300 mm, removal of excavated earth to directed location, dressing the soil in proper slopes, filling excavated bed with approved soil mixture, planting approved quality grass, including weeding out and removal of foreign matter, cutting the grass watering and maintaining for a period of six months.	sqm	800				
1.2	Potted plants(approx.) - ficus benamina / panda, Pachypodium Lameri (about 3 to 4' height) Alamanda Grandiflora	nos	40				
1.3	Red Soil -The garden earth shall be loamy , properly screened of granulometry to suit the type of plant (coarser for trees and shrubs and finer for the lawns) containing adequate amount of humors, friable and free from perennial weeds stones and pebbles	brass	500				
1.4	Manure -dry cowdung manure	brass	250				
1.5	Rectangular Planter in GRC 2" thk. (Size -2'x 39'/ ht. 1'-6")	sqm	90				

2	Supplying and planting trees as per under noted varieties of heights as mentioned above ground level after planting including excavation of appropriately sized pit, , removal of excavated earth to desired location filling the pit with soil mixture etc. as per specifications and as directed complete in all respect including maintaining, watering and nurturing the trees for six months. The trees may be planted individually in rows or in cluster as per direction:						
2.1	Alpinia Zerumbet (1' to 2' Height)	nos	10				
2.2	Alpinia Purpurata (9" to 1' Height)	nos	10				
2.3	Peniclitia- Red (1' to 2' Height)	nos	10				
2.4	Bougainvilla-Formosa (1' to 2' Height)	nos	30				
2.5	Spathiphyllum(1' to 2' height	nos	10				
2.6	Araucaria(2' to 3' ht)	nos	20				
3	MOUNDING						
3.1	Providing, planting and developing circular mound. Mound area to be properly leveled before laying the grass & laying Of 9" of pebbles at the base above that 6" layer of prepared subgrade above that 1'-8" of sweet sand and final layer of grass properly leveled.	cum	50				
	TOTAL OF SECTIONS 1,2&3						
4	MAIN GATE						
4.1	Providing and fixing of automatic sliding gate of height 7' and wight 12' as per architects design with weight 45kg/sqm of S.S grade-304 , Jindal steel, complete item.	nos	1				
4.2	Providind and fixing of wicked gate of ht 7' and width 4' as per architects design with weight 45kg/sqm S.S grade-304, Jindal steel, complete item.	nos	1				
	TOTAL OF ALL SECTIONS IN RS.						
	TOTAL OF ALL SECTIONS IN WORDS						



NOTES :

1. ALL DIMENSIONS AREA IN FOOT & INCHES .
2. MARKED DIMENSION SHALL BE FOLLOWED NOT TO BE SCALED.
3. ALL DISCREPANCY TO BE BROUGHT TO THE NOTICE OF THE ARCHITECT BEFORE EXECUTION OF THE WORK.
4. THIS DRAWING TO BE READ IN CONJUNCTION WITH RELEVANT ARCHITECTURAL, STRUCTURAL, PLUMBING AND ELECTRICAL DRAWINGS.
5. ALL BRICK WALLS ARE 250 MM INCLUDING PLASTER.

NOTES FOR PLANTS MATERIAL

1. SIZE OF PIT FOR TREES-1200x1200x1200
2. SIZE OF PIT FOR -800x 600x 600 SHRUBS
3. HEIGHT OF SAPLING-2500 AND ABOVE FOR TREES
4. HEIGHT OF SAPLING-1200 AND ABOVE. FOR SHRUBS
5. HEIGHT OF SAPLING - 300/200 POT. FOR GROUND COVERS
6. FOR SMALL TREES WHERE THE SAPLING HEIGHT IS NOT AVAILABLE.

LIST OF PLANT MATERIAL: TREES.

CODE	BOTANICAL/COMMON NAME
T-1	ALPINIA ZERUMBET(1' TO 2' HEIGHT)
T-2	ALPINIA PURPURATA(9" TO 1' HEIGHT)
T-3	PENICITLIA-RED (1' TO 2' HEIGHT)
T-4	BOUGAINVILLEA-FORMOSA(1' TO 2' HT)
T-5	SPATHIPHYLLUM(1' TO 2' HEIGHT)

SHRUBS / CREEPERS

S-1 ADENOCALYMA COMOSUM
S-2 BAUHINIA ACUMINATA
S-3 BEGNONIA VENOSA

GROUND COVERS

G-1 JYOSIA JAPANICA
G-2 RED SOIL

Project :-

**GUEST HOUSE FOR IITM DELHI
RAJINDER NAGAR NEW DELHI**

Drg. Title :-

LANDSCAPE PLAN AND DETAILS.

Architect
Virender Sharma and Associates.
Architects,Engineers,Interior Consultants
A3-205A Janak Puri New Delhi-110058
Tel-011-25598151, Mobile- 9811020690

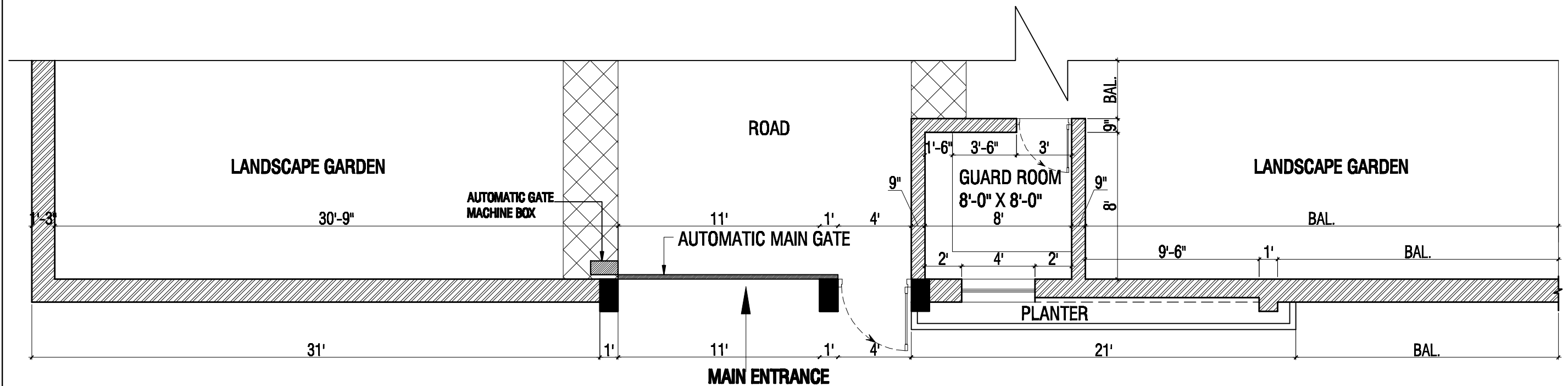
Scale :- N.T.S.

Dm. by:- OMIKAR SAINI

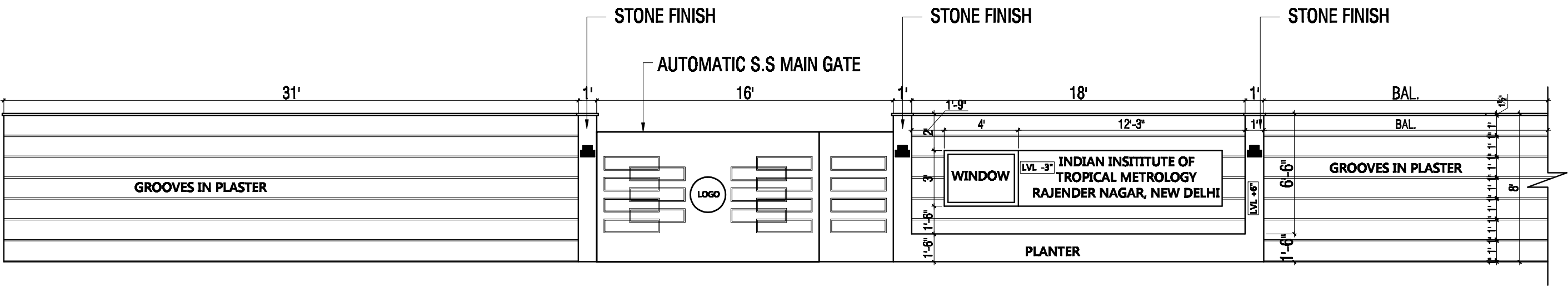
Chkd. by:- Mr. V. K.Sharma

REG. NO:

Q. NO.
L-01



PART BOUNDARY WALL PLAN



FRONT ELEVATION

- LEGEND**
MAXIMUM SIZE FOR MAIN GATE
1. HEIGHT = 7'-0"
2. WIDTH = 12'-0"
3. WEIGHT - 45KG/SQM (APPROX.)

<div>NOTES :- 1. ALL DIMENSIONS ARE IN FEET / INCHES 2. DISCREPANCIES IN DIMENSIONS OR OTHERWISE SHOULD BE BROUGHT TO THE NOTICE OF CONSULTANT BEFORE STARTING THE WORK. 3. THIS DRAWING SUPERCEDES EARLIER DRAWINGS. 4. THIS DRAWING SHOULD BE READ ONLY AND NOT TO BE SCALED.</div>	<div>PROJECT : GUEST HOUSE FOR IITM DELHI RAJINDER NAGAR NEW DELHI</div>	<div>DRAWING TYPE:- TENDER DRAWING</div>						<div>SHEET TITLE : BOUNDARY WALL DETAILS</div>			<div>ARCHITECT : M/s Virender Sharma & Associates Architects, Engineers & Interior DesignerS A-3/205A, Janakpuri, New Delhi-110058 Phone:- 011-25598151, Mobile:- 09811020690 email:- vsa2004@yahoo.co.uk</div>	
								<div>DRAWN BY : OMKAR SAINI</div>		<div>DATE : NOV,2013</div>		<div>DRG. NO.</div>
								<div>CONCEPT BY : AR. NISHANT SHARMA</div>		<div>SCALE : N.T.S.</div>		<div>A-10</div>
								<div>CHKD. BY : AR. NISHANT SHARMA</div>				
<div>COPYRIGHT :- THE COPYRIGHT AND PROPERTY OF THIS DESIGN AND DRAWING BELONGS TO M/S VIRENDER SHARMA AND ASSOCIATES. IT MUST NOT BE COPIED OR REPRODUCED IN ANY MANNER WITHOUT THEIR WRITTEN CONSENT. A LEGAL ACTION AS PER LAW MAY BE INITIATED AGAINST THE OFFENDER.</div>	<div>CLIENT : IITM NEW DELHI</div>							<div>APP. BY : AR. VIRENDER SHARMA</div>				
		S.NO.	DATE	REVISION	ISSUED TO	NO. OF PRINTS	REMARKS					